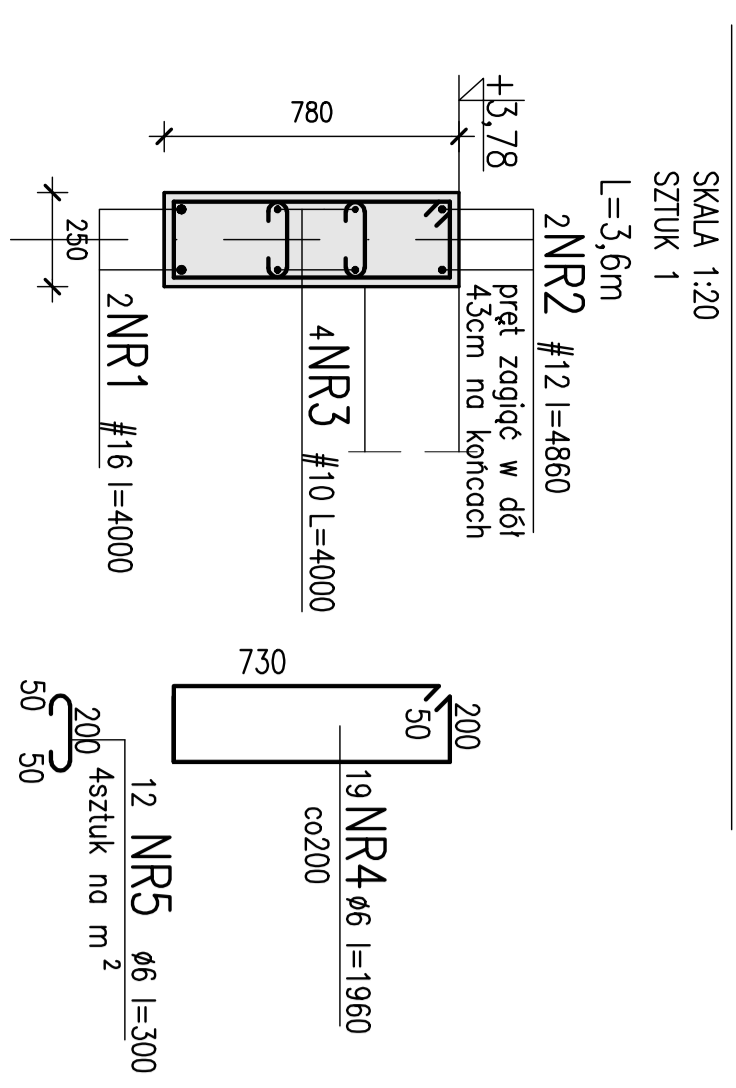
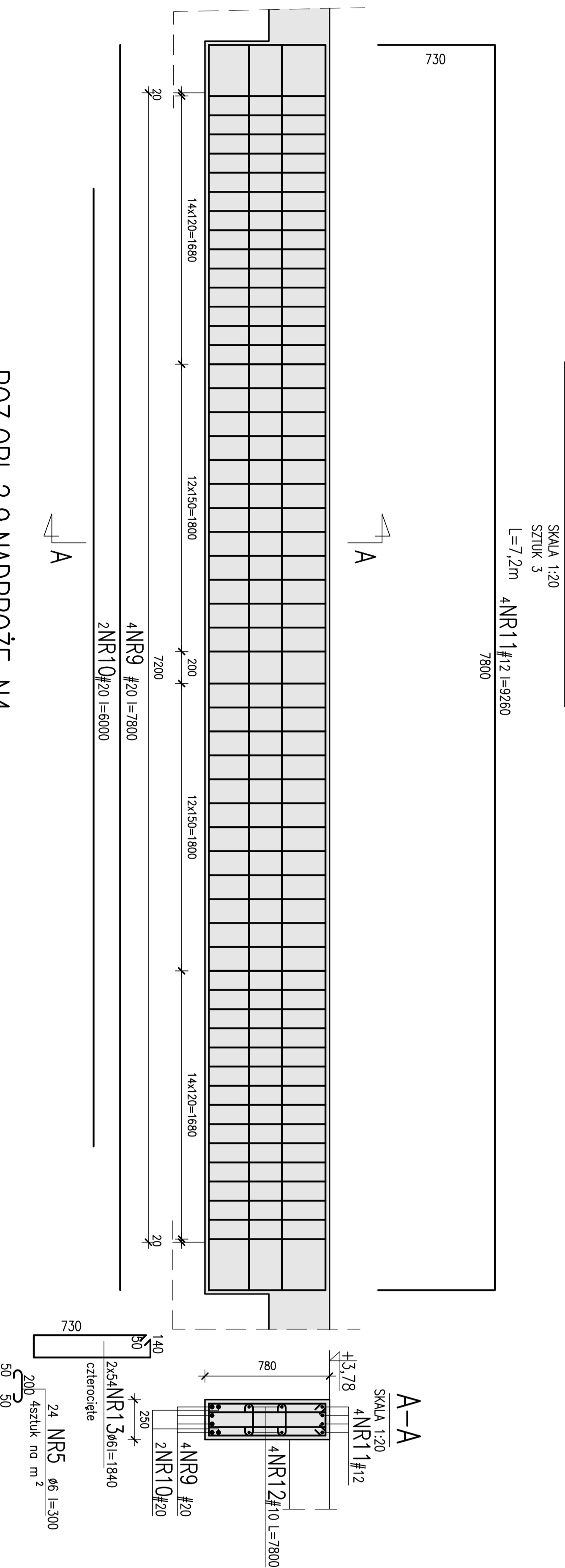


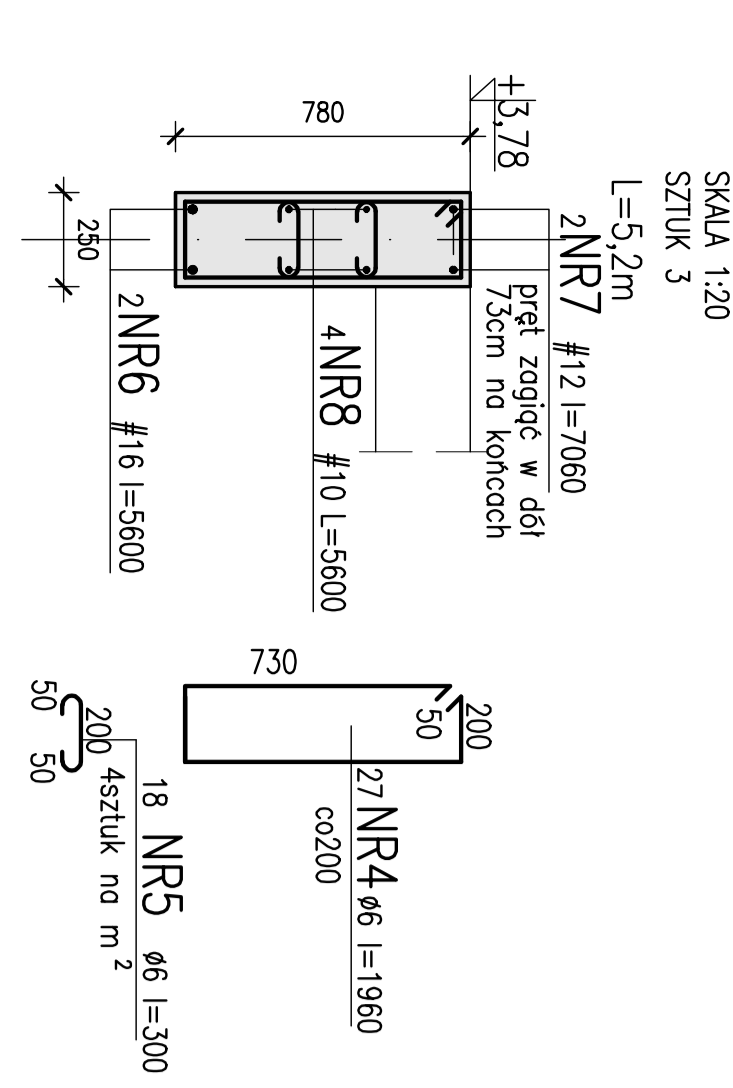
POZ.OBL.2.6.NADPROŻE N1



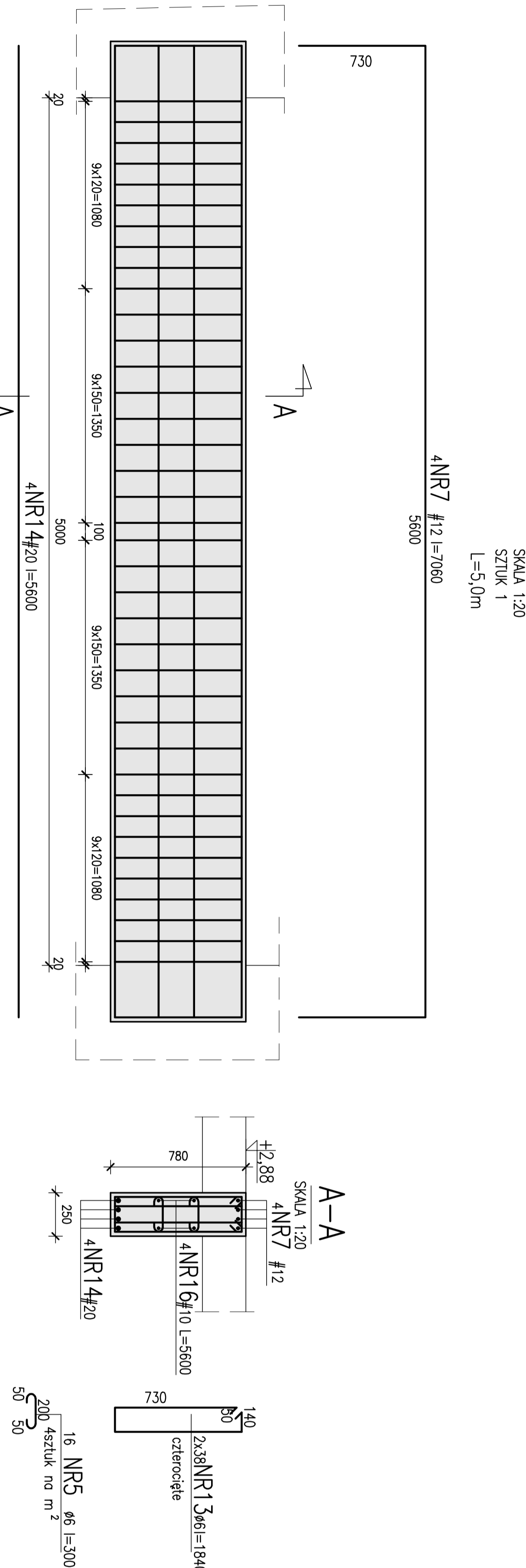
POZ.OBL.2.8.NADPROŻE N3



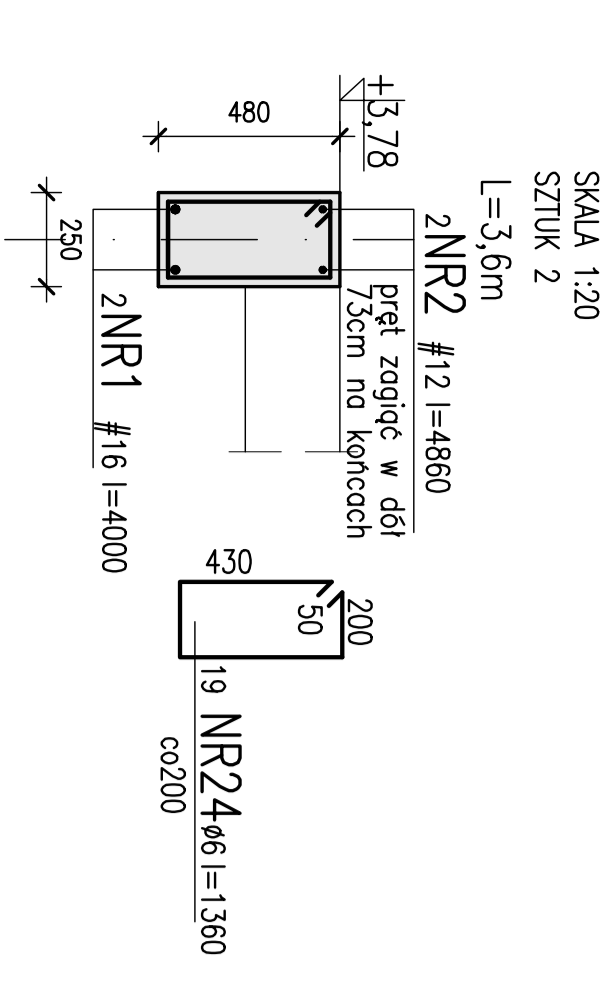
POZ.OBL.2.7.NADPROŻE N2



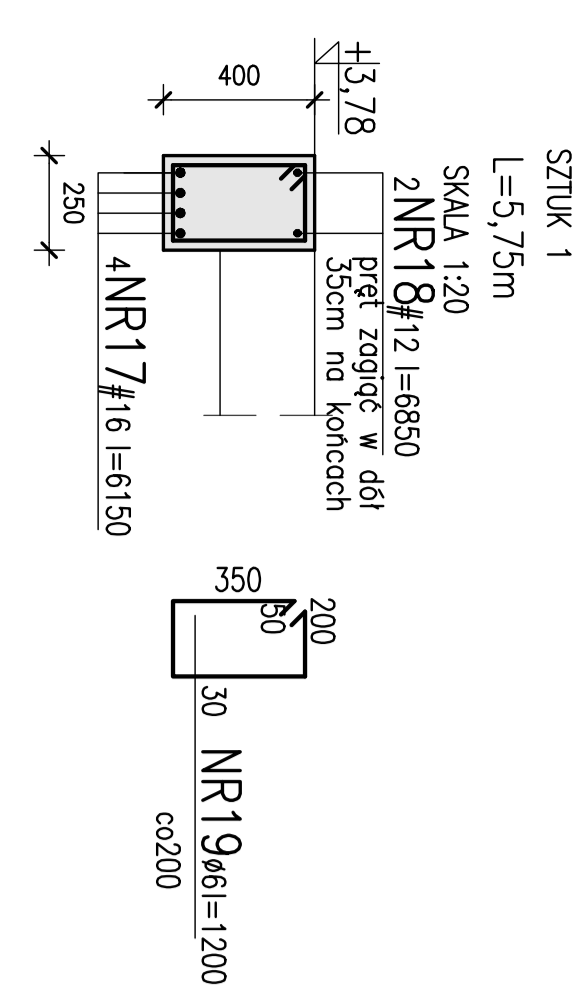
POZ.OBL.2.9.NADPROŻE N4



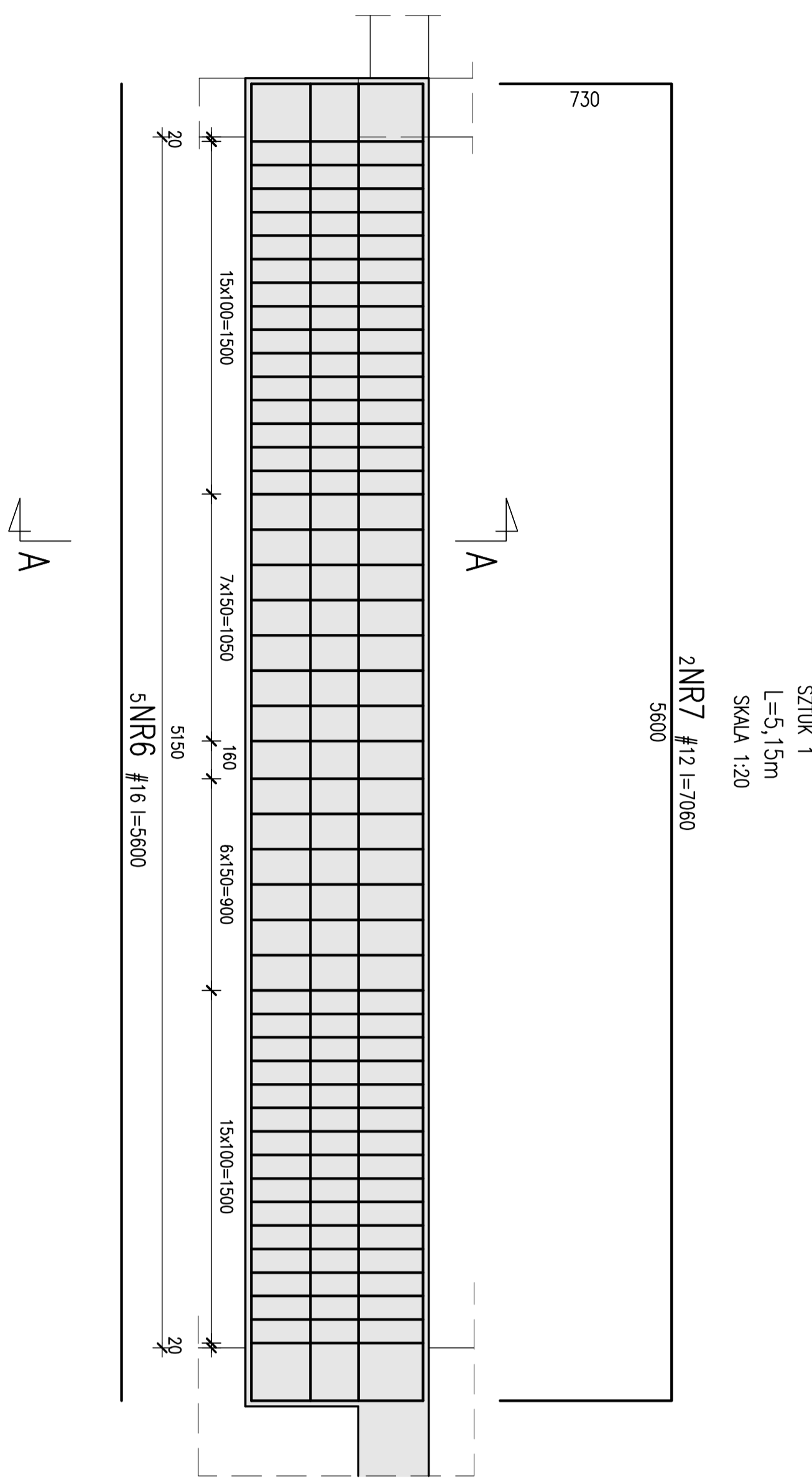
NADPROŻE N6



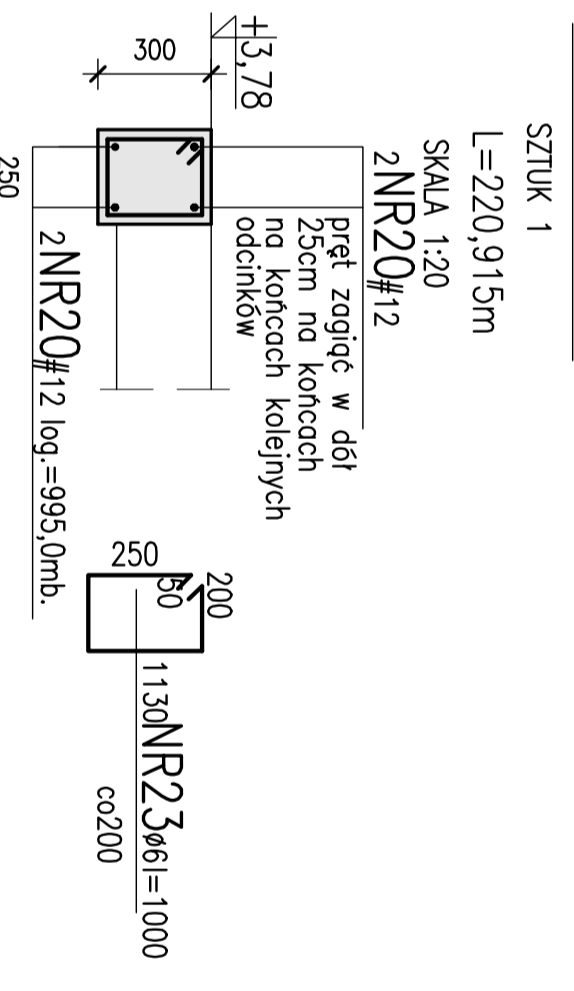
POZ.OBL.2.10.PODCIĄG P1



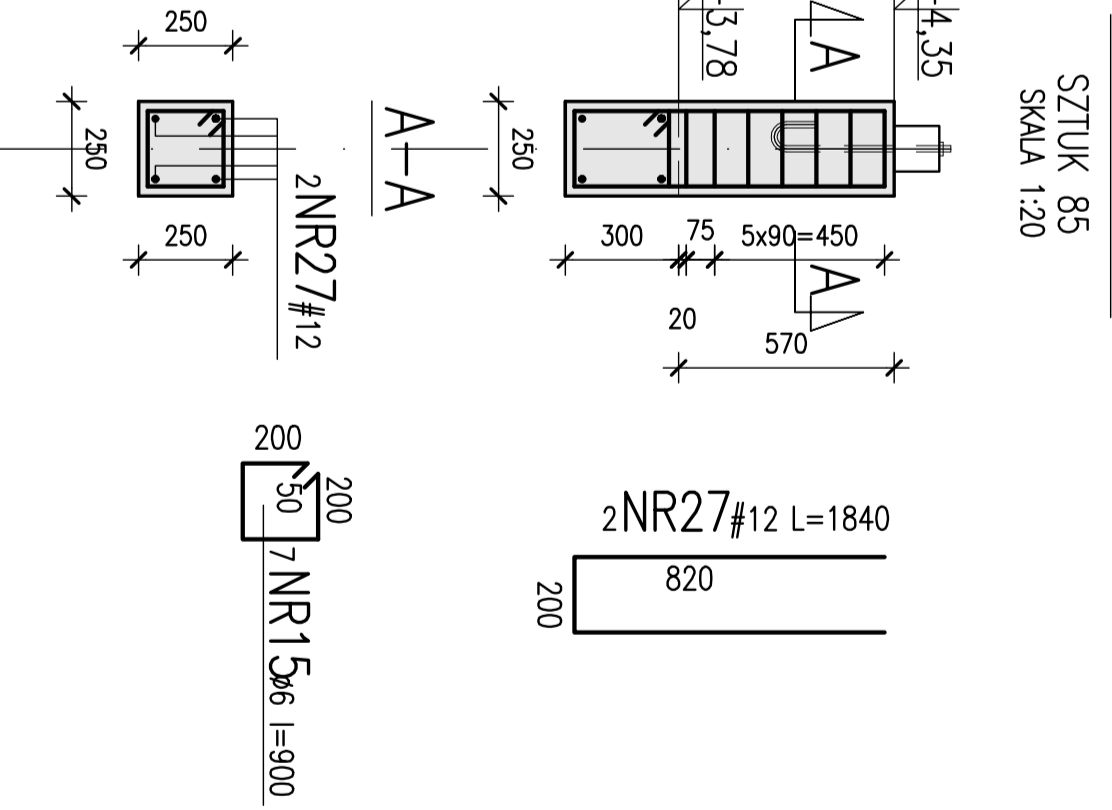
POZ.OBL.2.11.PODCIĄG P2



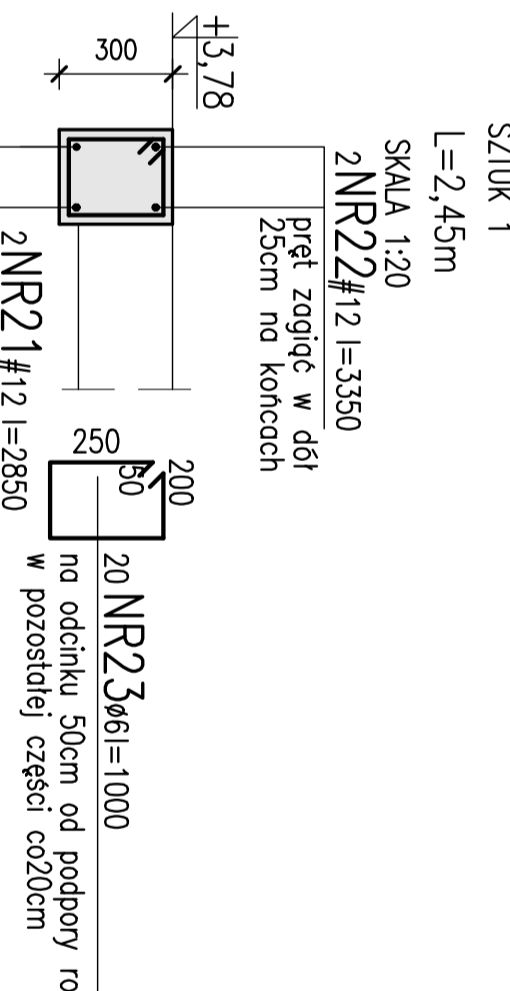
WIENIEC W1



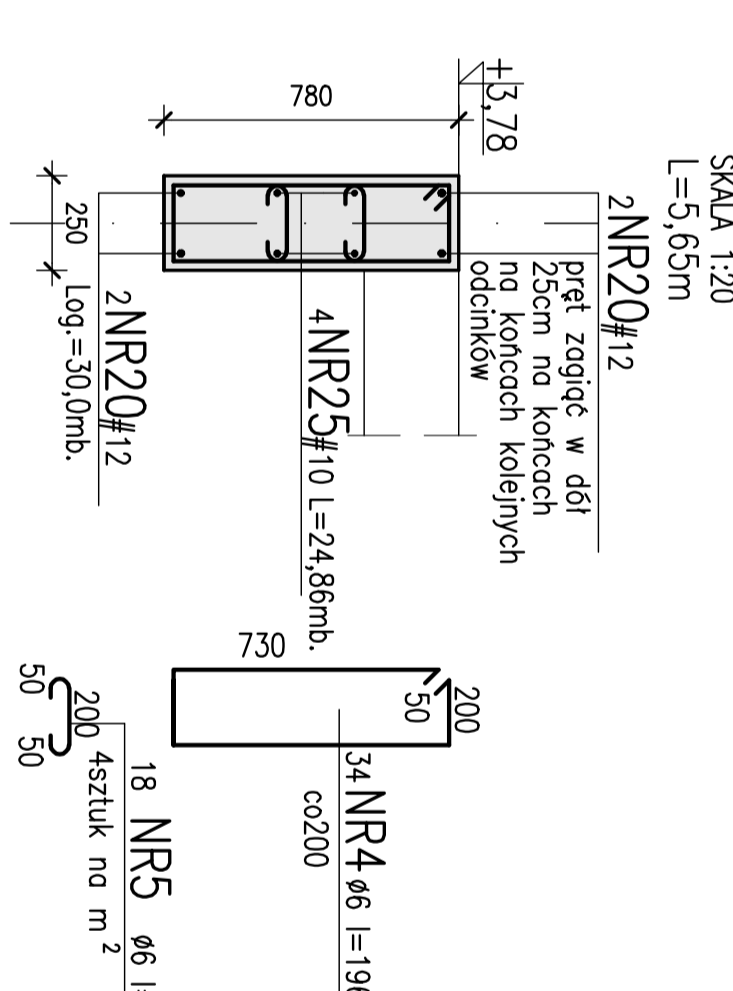
TRZPIEŃ T1



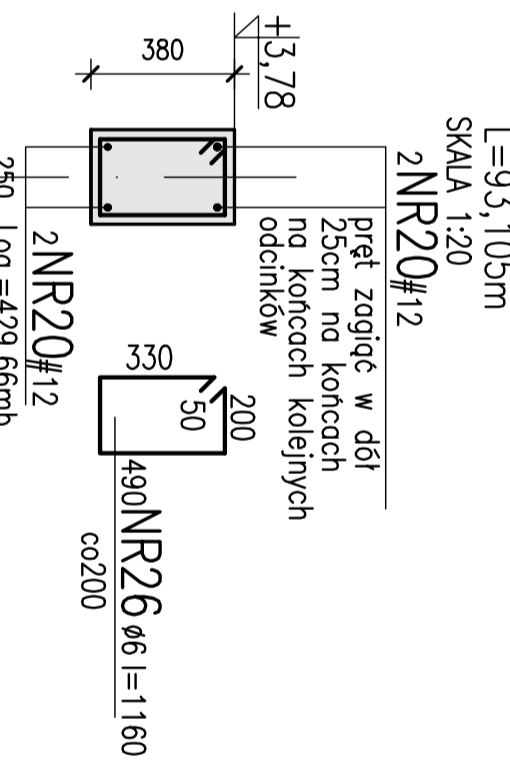
WIENIEC W1a



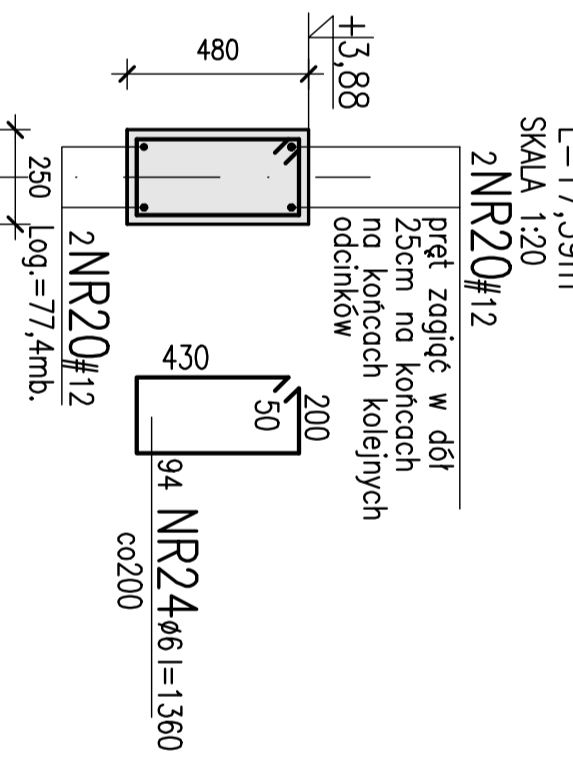
WIENIEC 2



WIENIEC 3



WIENIEC 4



WYKAZ STAL ZBROJENIOWEJ

Nr	Symbol	Długość	Ilość	Długość	Ważenie
01	#	mm	szt.	mm	kg
1	12	4850	4	19400	23.2
2	10	1960	16	32960	24.0
3	12	1960	16	32960	24.0
4	12	1960	16	32960	24.0
5	6	300	18	5400	6.6
6	12	7060	4	28240	6.6
7	12	7060	4	28240	6.6
8	12	7060	4	28240	6.6
9	20	780	7	15960	93.6
10	20	780	7	15960	93.6
11	12	926	12	11112	12.0
12	10	1780	12	21360	11.1
13	12	1780	12	21360	11.1
14	6	300	18	5400	22.4
15	6	300	18	5400	22.4
16	6	300	18	5400	22.4
17	12	6130	2	12260	24.6
18	12	6130	2	12260	24.6
19	6	300	18	5400	13.7
20	6	300	18	5400	13.7
21	12	15320	1	15320	153.2
22	12	2850	2	5700	5.7
23	6	300	18	5400	6.7
24	6	300	18	5400	6.7
25	6	300	18	5400	6.7
26	6	300	18	5400	6.7
27	6	300	18	5400	6.7
28	6	300	18	5400	6.7
29	6	300	18	5400	6.7
30	6	300	18	5400	6.7
31	6	300	18	5400	6.7
32	6	300	18	5400	6.7
33	6	300	18	5400	6.7
34	6	300	18	5400	6.7
35	6	300	18	5400	6.7
36	6	300	18	5400	6.7
37	6	300	18	5400	6.7
38	6	300	18	5400	6.7
39	6	300	18	5400	6.7
40	6	300	18	5400	6.7
41	6	300	18	5400	6.7
42	6	300	18	5400	6.7
43	6	300	18	5400	6.7
44	6	300	18	5400	6.7
45	6	300	18	5400	6.7
46	6	300	18	5400	6.7
47	6	300	18	5400	6.7
48	6	300	18	5400	6.7
49	6	300	18	5400	6.7
50	6	300	18	5400	6.7
51	6	300	18	5400	6.7
52	6	300	18	5400	6.7
53	6	300	18	5400	6.7
54	6	300	18	5400	6.7
55	6	300	18	5400	6.7
56	6	300	18	5400	6.7
57	6	300	18	5400	6.7
58	6	300	18	5400	6.7
59	6	300	18	5400	6.7
60	6	300	18	5400	6.7
61	6	300	18	5400	6.7
62	6	300	18	5400	6.7
63	6	300	18	5400	6.7
64	6	300	18	5400	6.7
65	6	300	18	5400	6.7
66	6	300	18	5400	6.7
67	6	300	18	5400	6.7
68	6	300	18	5400	6.7
69	6	300	18	5400	6.7
70	6	300	18	5400	6.7
71	6	300	18	5400	6.7
72	6	300	18	5400	6.7
73	6	300	18	5400	6.7
74	6	300	18	5400	6.7
75	6	300	18	5400	6.7
76	6	300	18	5400	6.7
77	6	300	18	5400	6.7
78	6	300	18	5400	6.7
79	6	300	18	5400	6.7
80	6	300	18	5400	6.7
81	6	300	18	5400	6.7
82	6	300	18	5400	6.7
83	6	300	18	5400	6.7
84	6	300	18	5400	6.7
85	6	300	18	5400	6.7
86	6	300	18	5400	6.7
87	6	300	18	5400	6.7
88	6	300	18	5400	6.7
89	6	300	18	5400	6.7
90	6	300	18	5400	6.7
91	6	300	18	5400	6.7
92	6	300	18	5400	6.7
93	6	300	18	5400	6.7
94	6	300	18	5400	6.7
95	6	300	18	5400	6.7
96	6	300	18	5400	6.7
97	6	300	18	5400	6.7
98	6	300	18	5400	6.7
99	6	300	18	5400	6.7
100	6	300	18	5400	6.7

UWAGI:
 - BETON C25/30
 - STAL AIII(A-B-S1500)
 - STAL A0

1. PROJEKTOWAŁ: PRYMYWAŁ: DZIAŁAŁ: Z PRG-AR04.
 2. PROJEKTOWAŁ: PRYMYWAŁ: DZIAŁAŁ: Z PRG-AR04.
 2-4-00=118.5mm.p.m.