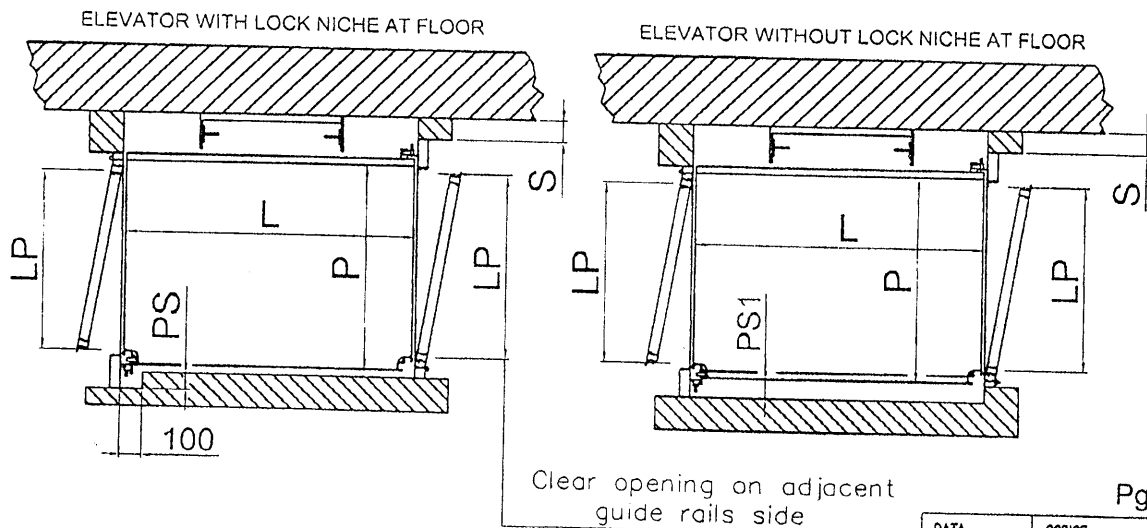
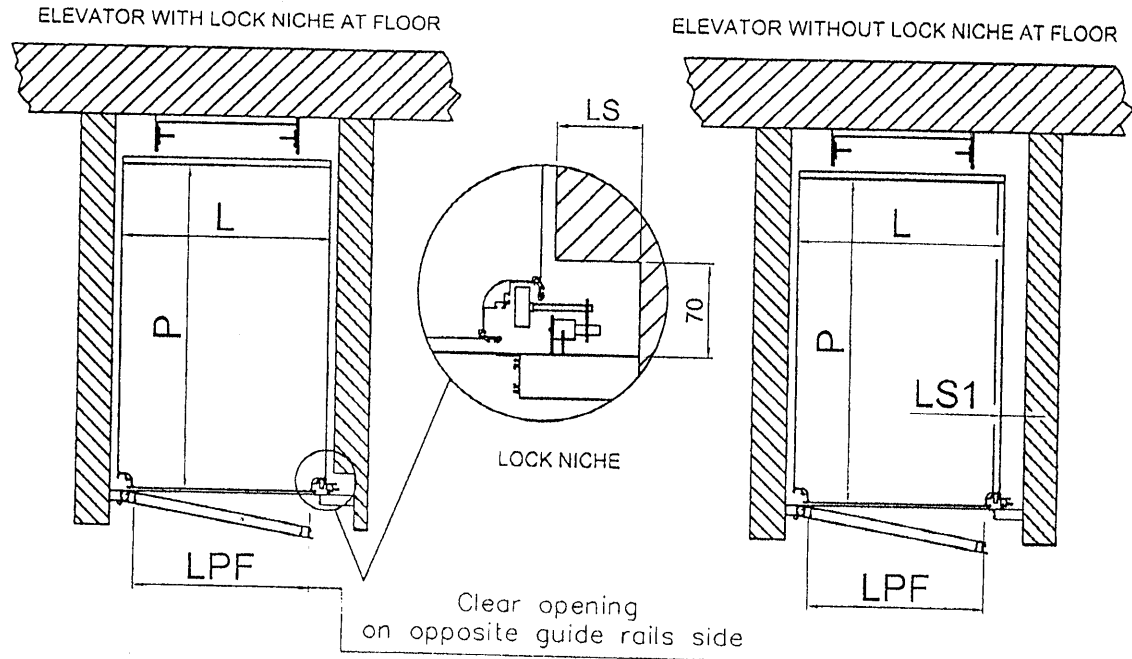


PLANE VIEW OF ELEVATORS  
(MASONRY SHAFT)



DATA	CODICE
01/04/05	8621801

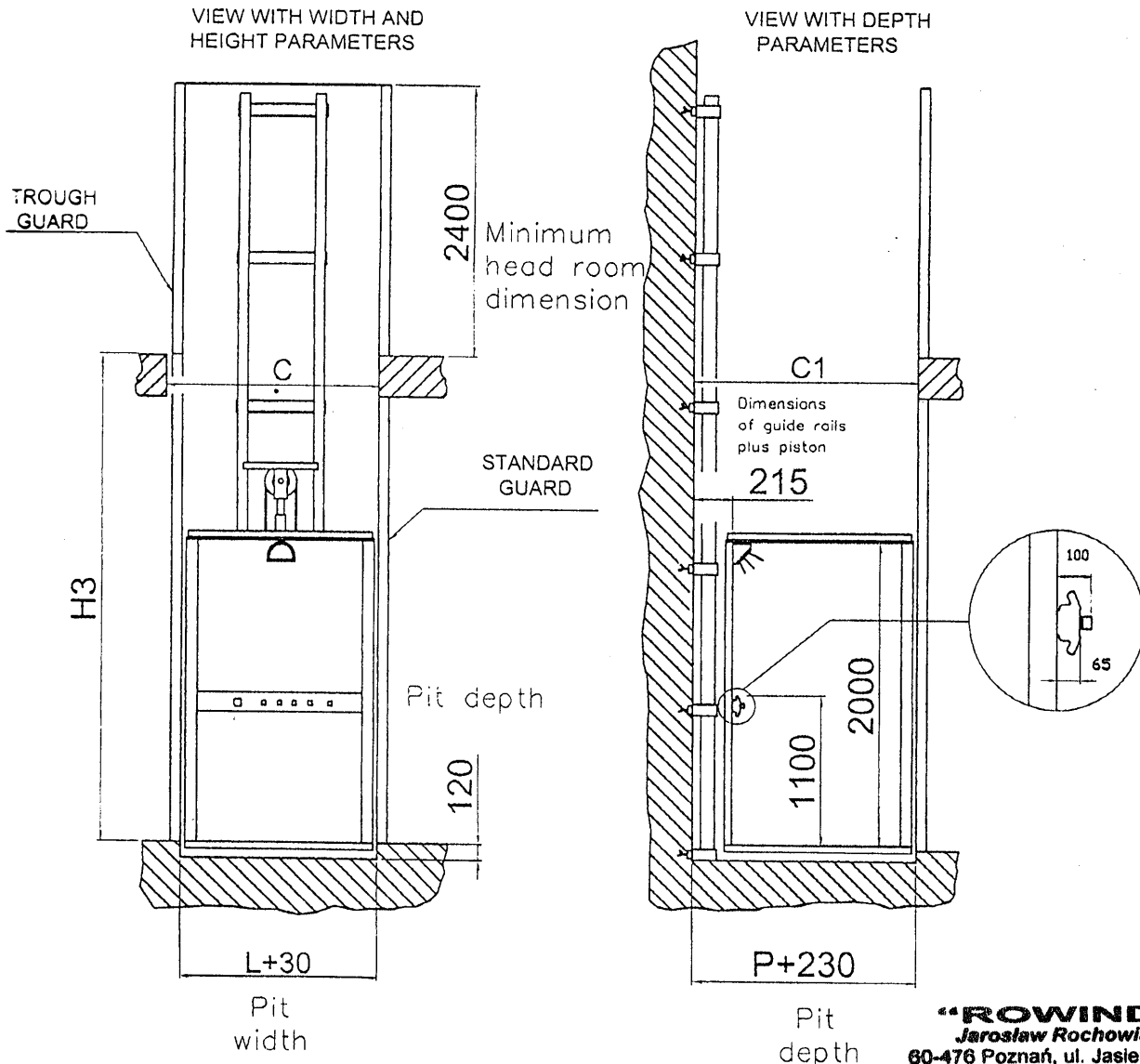
STANDARD SIZES

		L (Width)	P (Depth)			L	P
ACCESS:		770	950	ACCESS:		1250	1250
-SIDE		950	770	-SIDE		1000	1250
-FRONT		900	850	-FRONT		1400	1000
-COMBINED		850	900	-COMBINED		1000	1400
<p><b>"ROWIND"</b> Jarosław Rochowiak 60-476 Poznań, ul. Jasielska 8A tel./fax 061 65-666-40, kom. 502 618 846 NIP 972-030-42-18 REGON 300331740</p>						1400	1100
						1100	1400
						1250	1000
						1250	850
						850	1250

VARIABLES	GLAZED ALUMINIUM DOORS	DOUBLE SKIN PANEL / GLAZED DOORS
LP	P-75 (MAX 950) (PUSHB. PANEL EXCLUDED)	P-75 (MAX 950) (PUSHB. PANEL EXCLUDED)
PS	45/60	45/60
PS1	60	60
LS	45/60	45/60
LS1	60	60
LPF	L-150 (MAX 950)	L-150 (MAX 950)
S	70	100

We reserve the right to alter the specification without prior notification

## ELEVATOR FRONT AND SIDE VIEW (WITH GUARDS)



**"ROWIND"**  
Jarosław Rochowiak  
60-476 Poznań, ul. Jasielska 8A  
tel./fax 061 65-666-40, kom. 502 618 846  
NIP 972-030-42-18 REGON 300331740

$H3 = 10.3m$

Pg 2/3

**NB** The travel distance  $H3$  can be increased up to 11.35m with a smaller-sized car.

DATA 01/04/05  
CODICE 8621801

### STANDARD SIZES

C	WITH STANDARD GUARDS OR MASONRY SHAFT	L+30
	WITH ONE THROUGH GUARD	L+80
	WITH TWO THROUGH GUARDS	L+130
C1	WITH STANDARD GUARDS OR MASONRY SHAFT	P+230
	WITH THROUGH GUARDS	P+280

### TECHNICAL FEATURES

Rated load	Power	Voltage	Motor voltage	Auxiliary voltage	Speed
300 [daN]	1.5 [KW]	230 [V-mon.]	230 [V]	24 [V-cc]	6-9 [m/min.]

We reserve the right to alter the specification without prior notification.